

## FIND THE WAY FROM LEAVES TO TREES

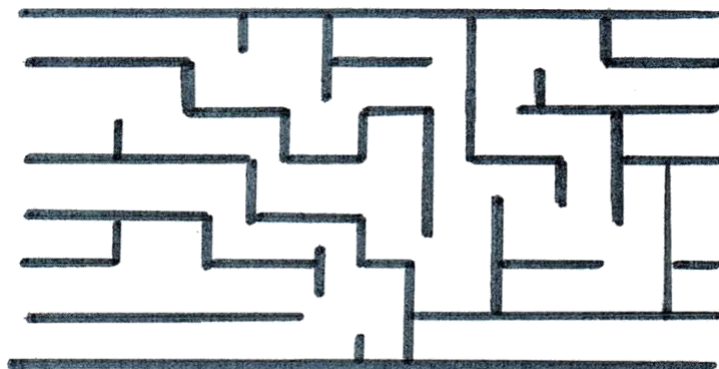
Yesterday was very windy. Some of the leaves fell off the trees and blew them away. Try to find the right way from leaves to trees. (*Včeraj je močno pihalo, zato je nekaj listov odpadlo. Liste je odneslo stran od njihovih dreves. Pomagaj jim najti pravo pot, ki vodi do njihovega drevesa.*)

Navodila imaš za dve drevesi. Pri zadnjem daj ti navodilo svojim staršem ali bratu/sestri.



Follow the directions:

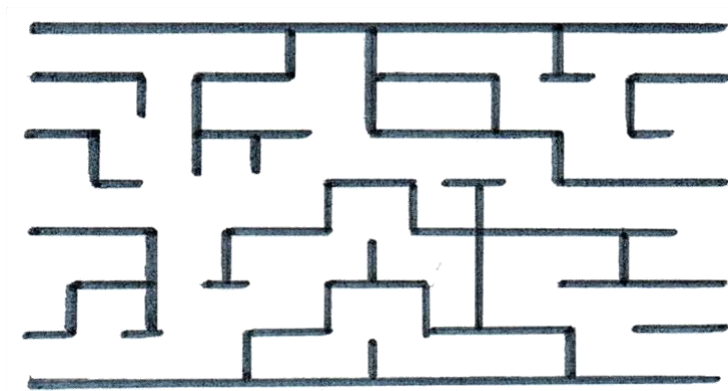
Go 2 steps straight, 1 step right, 2 steps straight, 1 step right, 2 steps straight, 1 step right, 1 step straight, 2 steps left, 1 step straight, 1 step right, 1 step straight, 2 steps left, 2 steps left, 2 steps straight, 2 steps right, 1 step right, 3 steps straight.



ЛИПА

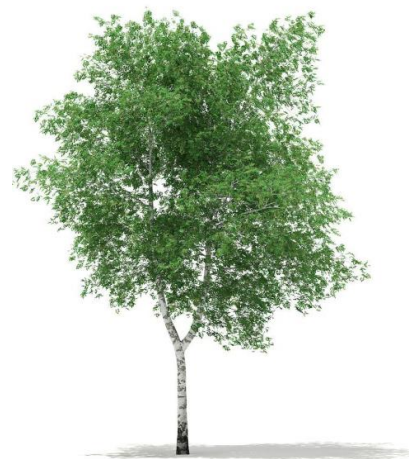
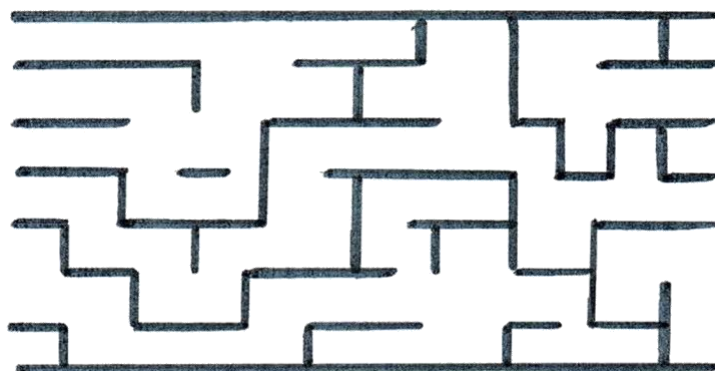
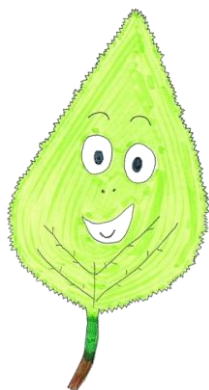
**A LINDEN TREE (LIPA)**

Go 5 steps straight, 1 step left, 4 steps straight, 1 step right and 3 steps straight.



**AN OAK (HRAST)**

Now you make the directions.



**A BIRCH (BREZA)**

Slikovno gradivo dreves:

- <https://coastlinesurfsystem.com/urejanje-krajine/unikatno-drevo-apna/>
- <https://labrys.ru/sl/color/oak-wikipedia-watch-what-oak-is-in-other-dictionaries/>
- <https://www.cgtrader.com/3d-models/plant/leaf/silver-birch-betula-pendula-13m>